



TrilogyTouch T2 TL2700

EZ-Touch Standalone Digital Cylindrical Lock

Top-Rated Trilogy Digital Locks Now with New Look, Sleek Backlit Touchsense Keypad & Same Functions



New TL-Series Trilogys®:

- **New! Sleek EZ Touch Sense Panel** with illuminating numbers that brighten to touch & go dark after use. Easy clean-plane surface
- **Same Operation, Programming & Functions** as standard DL2700 models
- **Grade 1 Durability.** Dependable lockset with rugged clutch mechanism
- **Up to 100 different user codes** (3-6 digits): 1 master, managers, 90 basic users, 3 one-time service codes
- **100% touchscreen keypad programmable** at the lock with a fingertip
- **Individual, group or total user lockout codes**
- **Easy passage mode** by manager and/or master
- **Easy to install in about an hour**, retrofits cylindrical knobsets & digital locks using slightly modified ANSI 161 Series Prep
- **Standalone battery operated**; 5 AA batteries rated at 200,000 cycles
- **Class-Leading Longest Battery Life, Lowest Maintenance & TCO**
- **Non-handed** for easy installation and versatility
- **2-wire remote override**
- **Visual and audible entry indicators**
- **All Trilogy models now weatherproof** as standard -31°F to +151°F (-35°C to +66°C)
- **Choice of Architectural Finishes:** Satin Chrome, Duronodic & Matte Black



Ideal for schools, healthcare, pharmacies, rental properties, offices, retail and corporate.

OPERATION: Clutch mechanism permits turning lever without retracting latch and reduces stress on lock bodies and spindle. Outside lever free turning in locked position. Entering access code, key bypass, or remote bypass will allow lever to retract latch. Inside lever always instant egress

DOOR THICKNESS: 1 5/8" to 1 7/8."

BACKSET: 2 3/4" Standard. 2 3/8" backset also available

KEYPAD: Sleek EZ Touch Sense Panel with illuminating numbers that brighten to touch & go dark after use programmable for multi-level access functions including group or individual user codes, master and management codes, passage and emergency or service code, lockout and remote override capability and allowable entry time from 5 to 20 seconds. 4 Different keypad tones and keypad may be silenced

STANDARD KEY OVERRIDE CYLINDERS: Solid brass 6 pin tumbler cylinder pinned 5, SC1 keyway, furnished in all locks. Additional tailpieces included: HW580 fits Schlage, Corbin/Russwin CL, Sargent 480 Series, ASSA65-611. Model HW620 fits Ilco and Lori cylinders

INTERCHANGEABLE CORE MODELS: Accepts 6 & 7 Pin Cylinders from: Best, Arrow, KSP, Medeco Keymark & Kaba Peaks. Also available IC Core models for Yale, Medeco, Sargent, Corbin/Russwin CL and Schlage. Alarm Lock Tailpiece is supplied; IC Core is not included

LATCHBOLT: UL Listed, fire rated, 3 hours, 1/2" throw, solid brass, deadlocking. Reversible. Adjustable front for flat or beveled doors

STRIKE: 1 1/8" x 2 3/4" T strike & 1 1/4" x 4 7/8" ASA strike included. With screws for wood or metal jambs

LATCH FRONT: 1 1/8" x 2 1/4" wrought brass or stainless steel

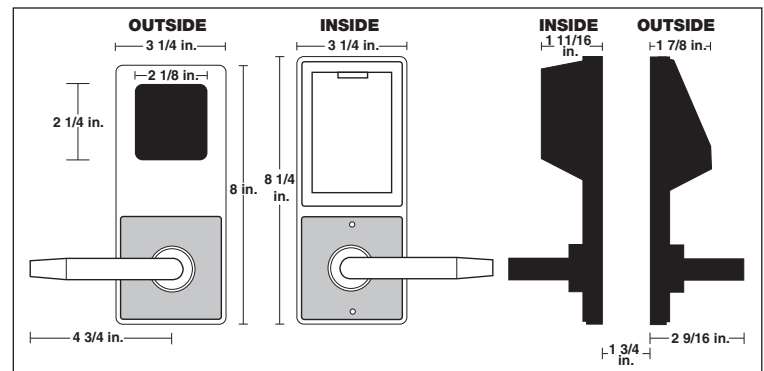
HANDING: Non-handed

FINISHES: US19 Matte Black, US26D Satin Chrome, 10B Duronodic

POWER: 5 AA alkaline batteries are now rated at 200,000 cycles, supplied. Audible low battery alert, visual and audible entry indicators, unique Flex Drive® motor

DOOR PREP: Standard ANSI 161 Series Prep, modified by adding additional through-bolt holes

COMPLIANCES: Grade 1, heavy duty cylindrical lockset, UL listed and FCC certified. ADA compliant leversets



Model & Series: TL27 = Trilogi Touch TL

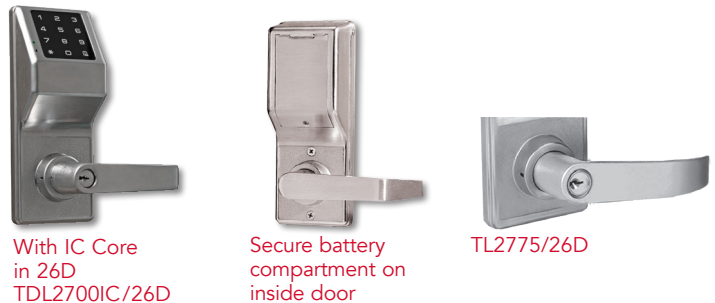
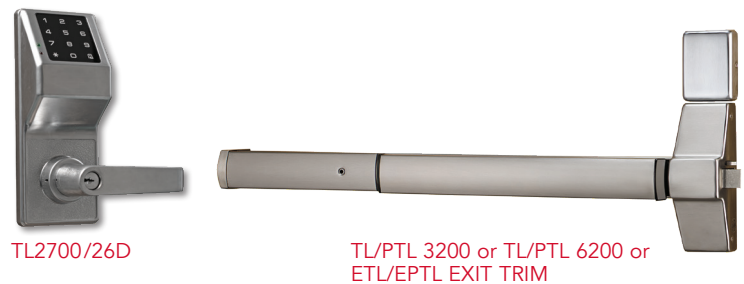
Trim: 00 = Lever
75 = Regal Trim Lever

Cylinder: IC = Standard Interchangeable Core Prep for Best, Falcon, Arrow, KSP
(Note: No "IC" indicates standard K.O. cylinder)

Finish: /26D = US26D Satin Chrome
/10B = Duronodic
/US19 = Matte Black

Special Order IC Prep: -Y = Yale
-M = Medeco
-R = Sargent
-C = Corbin/Russwin
-S = Schlage

UL CE



Trilogi Touch is available in many models, including those for networked Networkx, and Exit Trim applications, in digital and PIN/ Prox ID Reader versions.

Some Other Trilogi Touch Models:

TL3200 Trilogi Touch Digital Cylindrical w/ Enhanced Audit Trail

TL6200 Trilogi Touch Digital Networkx Cylindrical Networked Lock

PTL6200 Trilogi Touch Digital/Prox Networkx Cylindrical Networked Lock

ETTLN Trilogi Touch Digital Exit Trim for use w/ Panic Devices (generic cyl supplied)

EPTLN Trilogi Touch Digital/Prox Exit Trim for use w/ Panic Devices (generic cyl supplied)

RR-TRILOGYKIT Optional Remote Release Kit

Also See Trilogi Networkx™ Locks literature for more on wireless network capabilities



Alarm Lock Systems, LLC (A Division of NAPCO Security Technologies, Inc.)

333 Bayview Ave, Amityville, New York 11701

1-800-ALA-LOCK • 631.842.9400 • www.alarmlock.com • salesinfo@alarmlock.com
Trilogi® T2 and LocDown are trademarks of NAPCO. Other trademarks listed are those of their respective companies.
Some preliminary specifications subject to change without prior notice. © NAPCO 2024.10 ALA553